



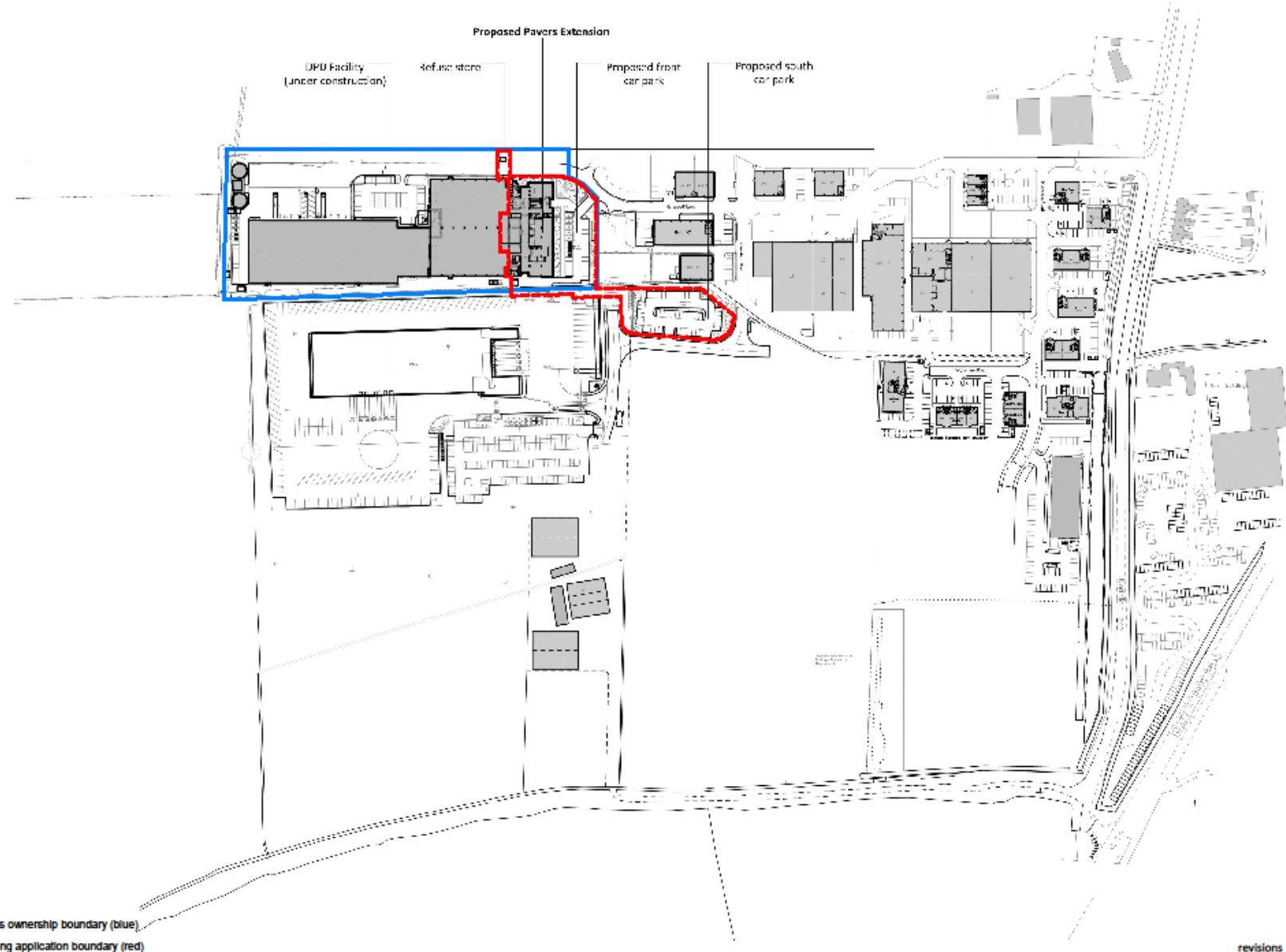
Planning Committee A

To be held on Thursday 3rd November 2022

22/01555/FULM - Pavers Ltd, Catherine House, Northminster Business Park, Harwood Road, Upper Poppleton, York.

Extension to Pavers facility to provide office space with associated car parking
and landscaping.

Site Location Plan



— Pavers ownership boundary (blue)
 - - - Planning application boundary (red)

revisions



group ginger

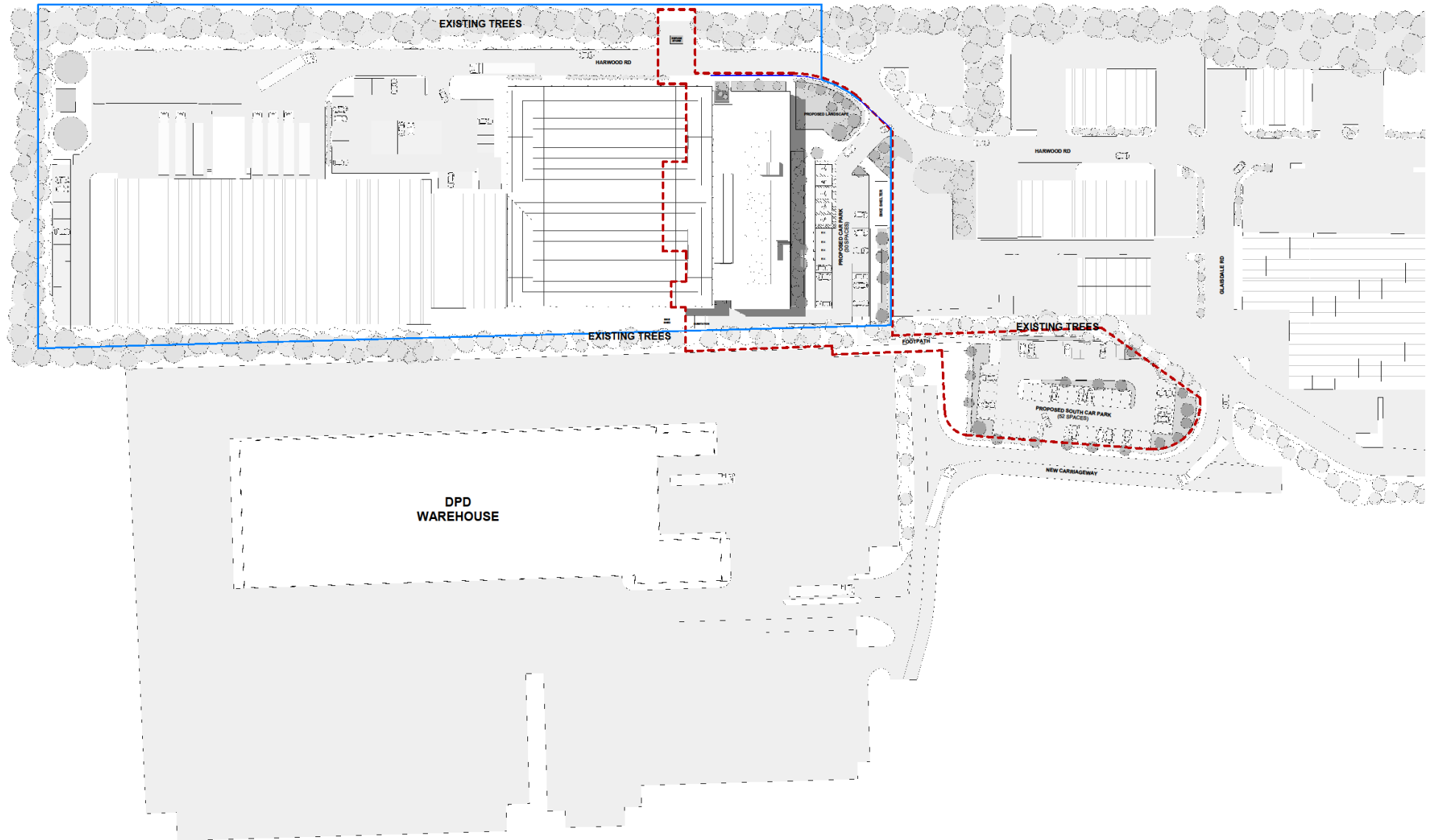
Proposed Location Plan

1:2500@A3 PNO-GGA-08-ZZ-DR-A-0102

Pavers New York Office

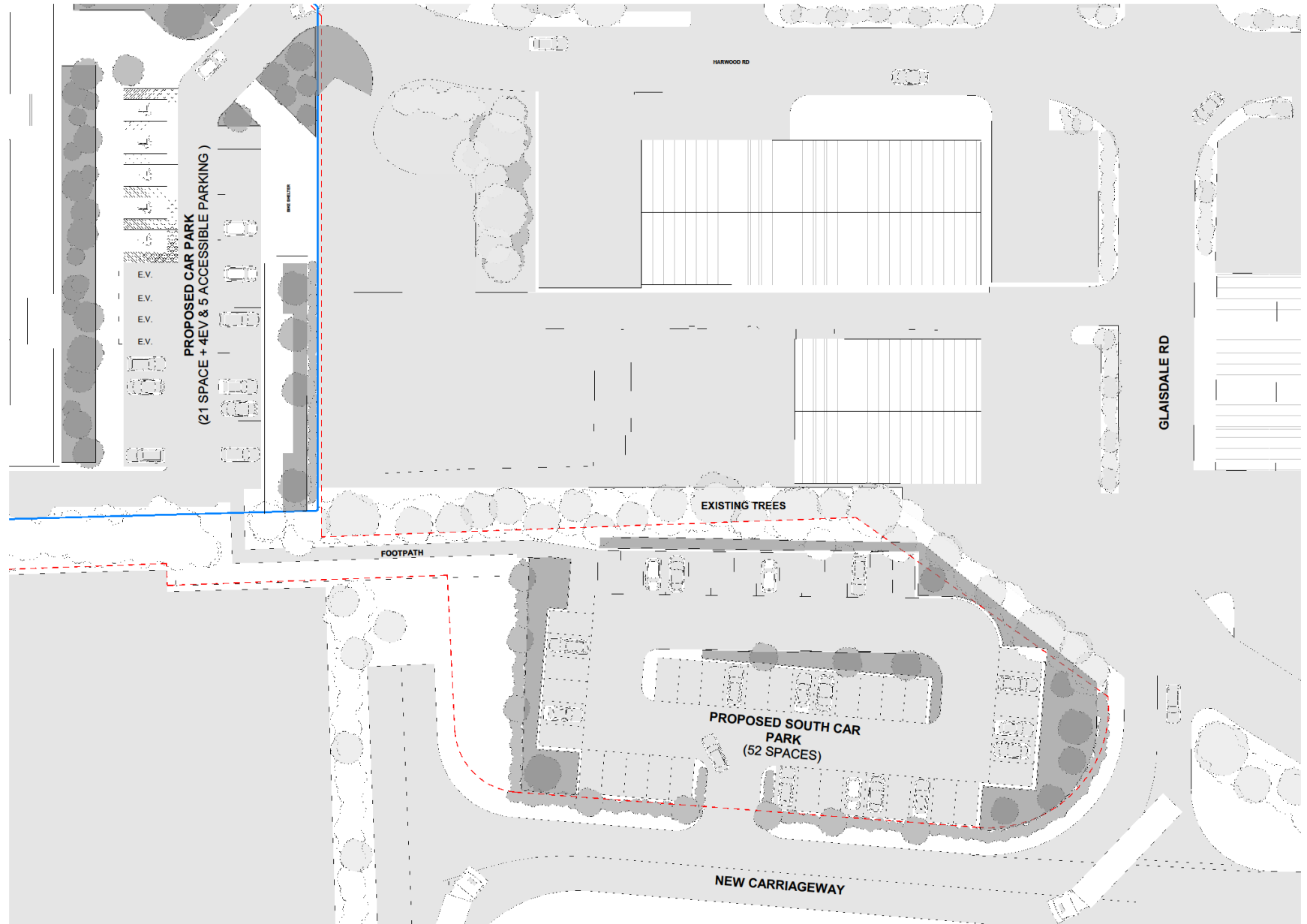
City of York Council Planning Committee Meeting - 3rd November 2022

Proposed Site Plan

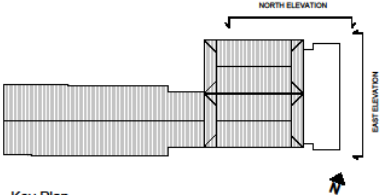


- Pavers ownership boundary (blue)
- - - Planning application boundary (red)

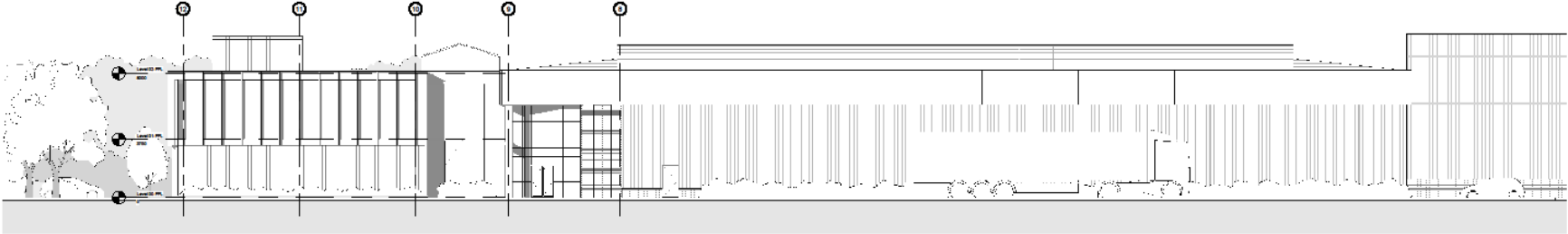
Proposed South Car Park



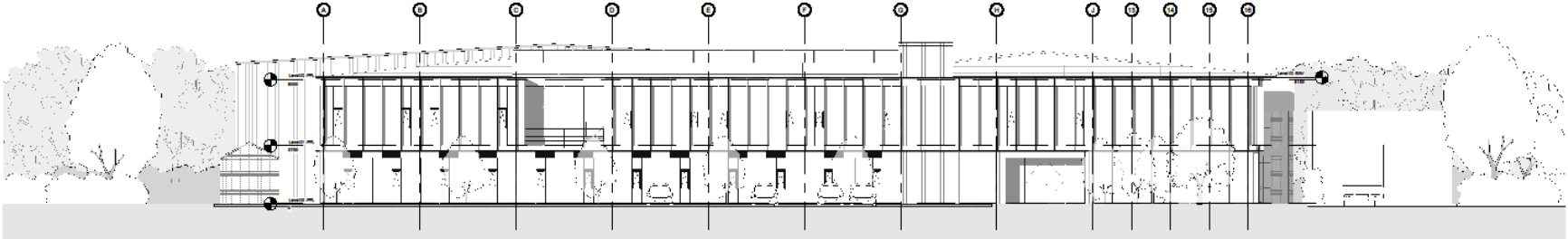
Proposed Elevations



Key Plan
1:2000



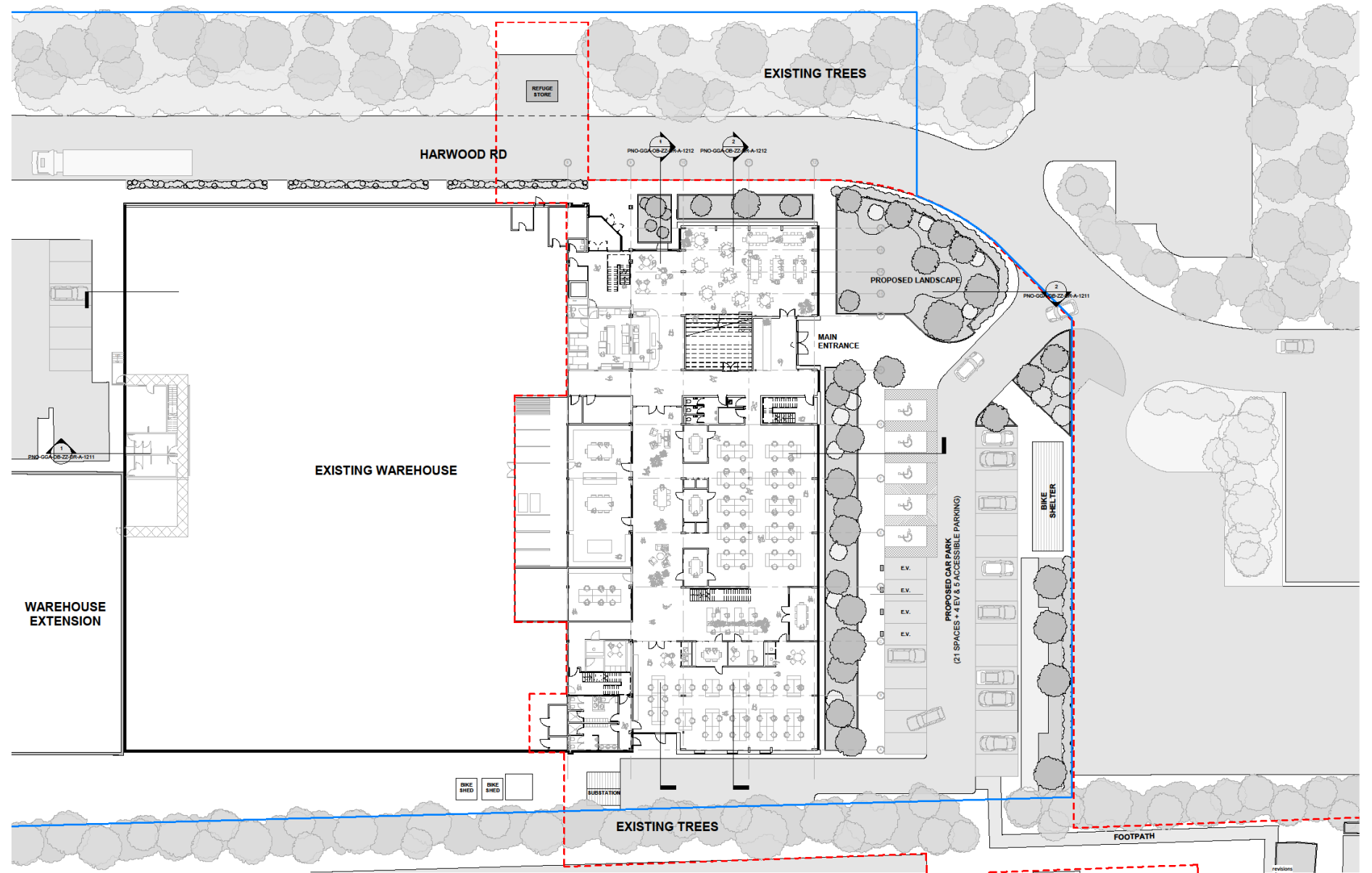
1 Proposed GA Elevation_North
1:200



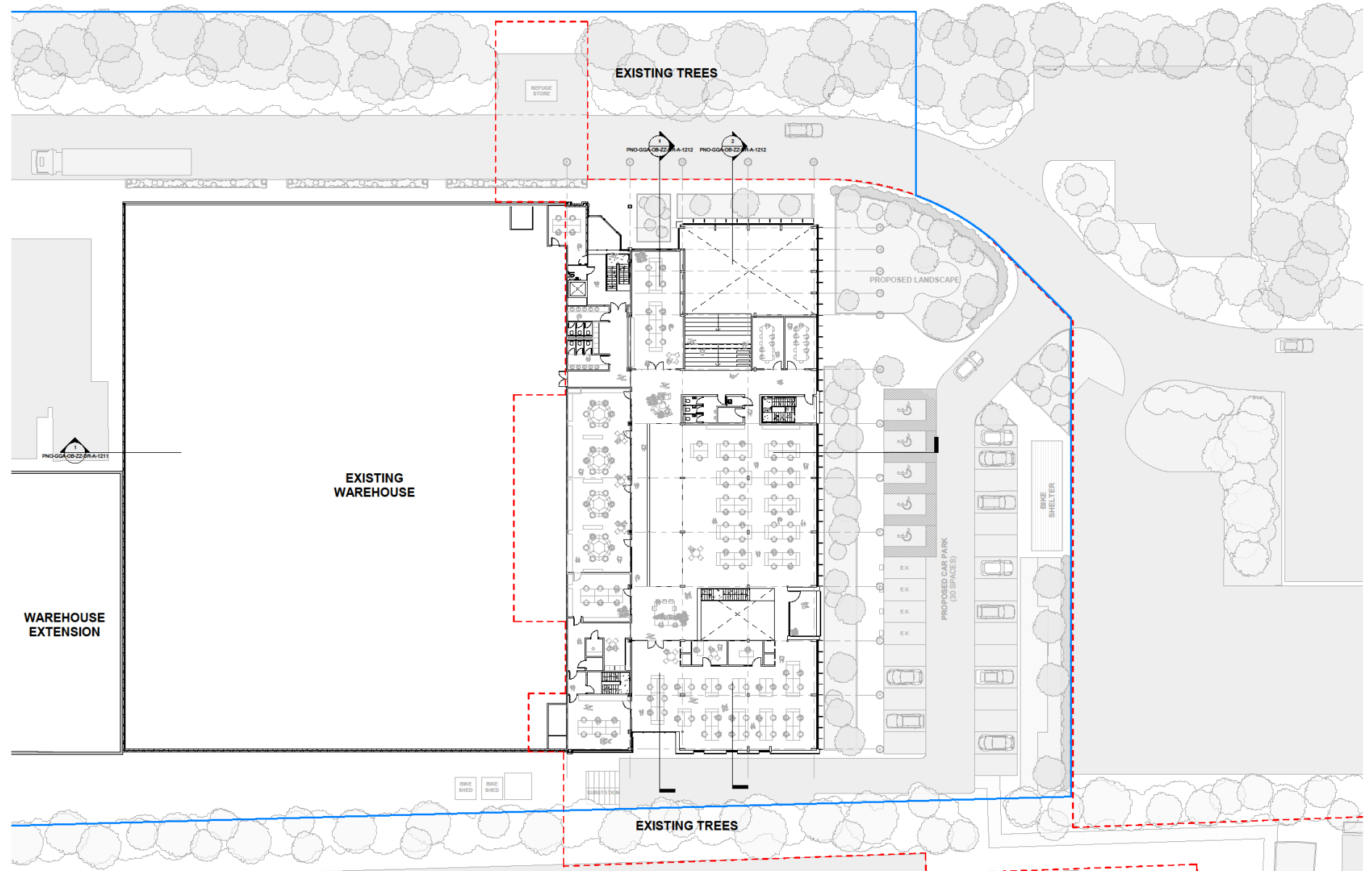
2 Proposed GA Elevation_East
1:200



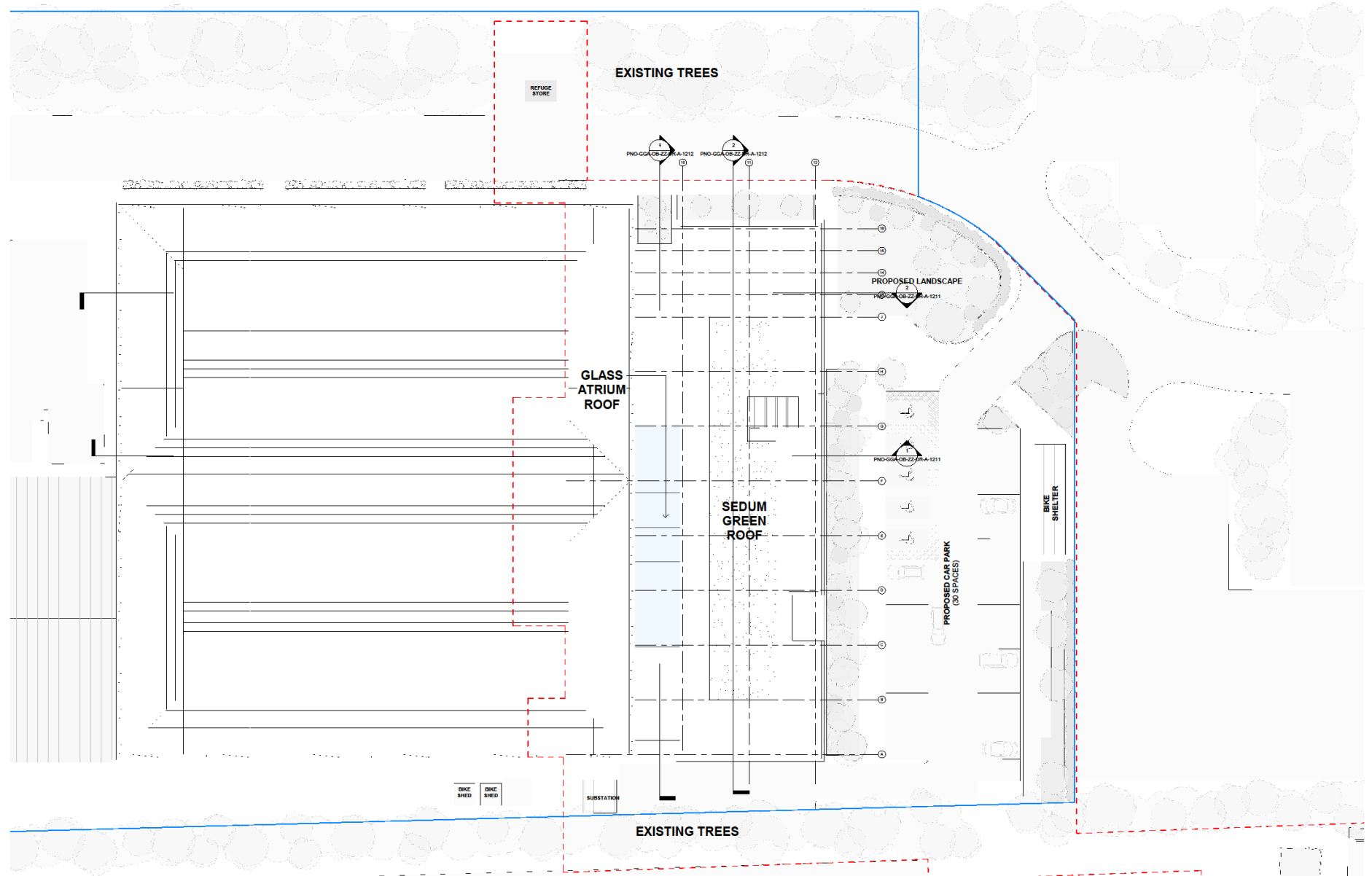
Proposed Ground Floor Plan



Proposed First Floor Plan



Proposed Roof Plan





1 Proposed GA Site Elevation_East
1 : 500



2 Proposed GA Site Elevation_North
1 : 500

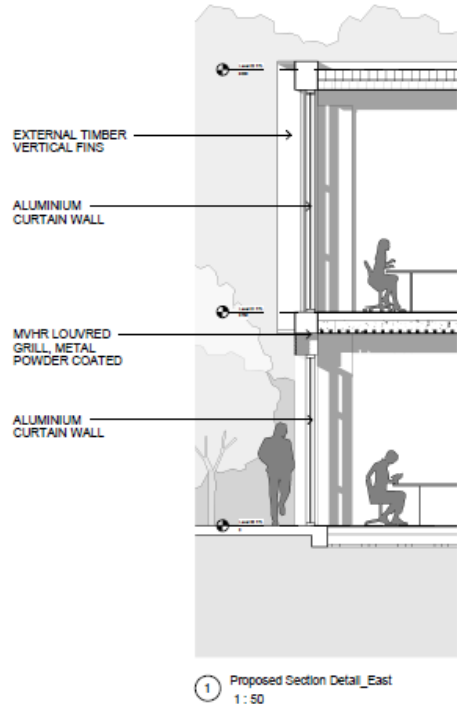
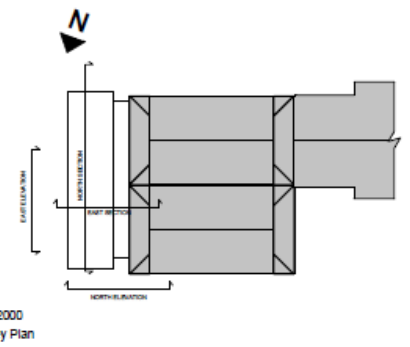


3 Proposed GA Site Elevation_South
1 : 500

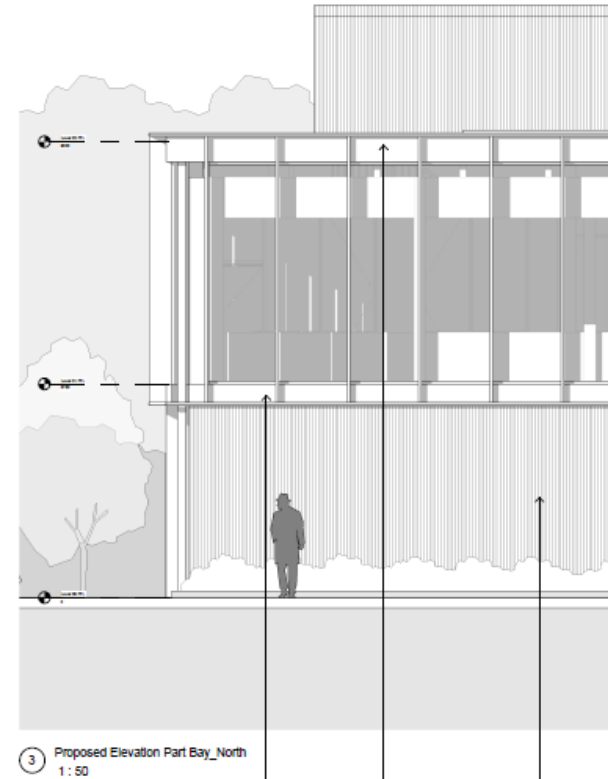


Proposed Sections

Large Scale Details



POWDER COATED METAL CLADDING PANEL TO MATCH METAL MVHR GRILL
MVHR LOUVRED GRILL, METAL POWDER COATED



POWDER COATED METAL CLADDING PANEL TO MATCH METAL MVHR GRILL
VERTICAL PROFILED METAL CLADDING, COLOUR MILL FINISH ALUMINIUM

